



MONTANA GEOLOGICAL SOCIETY

NEWSLETTER

SEPTEMBER 2008

MGS Vol. 52 No. 7

Wed. September 17th
“A Review of our Current
Energy Landscape and
Emerging Energy
Alternatives” presented
by Brian Gurney from
Montana State
University – Billings.
(Go to page 6 to review
Mr. Gurney’s biography.)

All MGS meetings are
held at the Billings
Petroleum Club at
11:45 a.m. unless
otherwise noted.
Members who do
not receive an
e-mail reminder
can RSVP by calling
Doretta Brush at
Ballard Petroleum
(406) 259-8790.

MGS HOME PAGE:
www.montanags.org
MGS EMAIL:
mgs@wtp.net



President’s Letter –

In my view, the three most important services the MGS provides for its membership are monthly speakers, field trips and short courses. These activities allow the membership to keep up on the latest geological thinking and provide an opportunity to meet and visit with other MGS members. Whereas continued learning is a critical aspect of any science, I think the social aspects of Society functions are really important as well. Starting this month, and in the coming year, with the help of the other MGS officers I hope to reinvigorate all of these Society functions with the aim of getting more members involved from a both a social and technical perspective.

(Continued on page 2.)

2007-2008 OFFICERS

President

Robert Schalla 294-3525

1st Vice President

Pat Lemke 259-8790

2nd Vice President

Brad Thompson 245-6248

Treasurer

Andrew Urie 245-6248

Secretary/Website Coordinator

Andy Hennes 245-6248

Past President

Jay Shearer 247-4451

NEWSLETTER EDITOR

Brad Thompson

BOARD OF DIRECTORS

Duncan McBane

Steven W. VanDelinder

Donald W. Wirth

Betsy Campen

AAPG DELEGATES

ROCKY MOUNTAIN SECTION

Don French and John Warne

Alternates:

Richard L. Findley and

Robin P. Diedrich

NATIONAL

John Warne and Don French

COMMITTEES

Advertising:

vacant

Continuing Education:

Joe Carlisle 294-6222

MGS Foundation:

Rob Diedrich 869-8643

Education Committee:

Betsy Campen 652-1760

Field Trips:

Steve VanDelinder 259-8790

Social:

Betsy Campen 652-1760

MGS-MAPL Golf Tournament

Keven Reinschmidt 259-8790

Christmas Party:

Rob Diedrich 869-8643

Mac Clark 259-2451

Membership:

Vacant

University Liaison:

Brad Thompson 245-6248

Northern Rockies

(President's letter continued from page 1.)

And so now my plea goes out. None of these things happen by themselves. The Society benefits from a dedicated and hard-working officer corps and Board of Directors, but we sure wouldn't mind a little help from time to time. Something as simple as suggesting a luncheon speaker or a short course you would be interested in attending are the kinds of input we can always use. Volunteering to follow through on your ideas is even better! For without the active participation of its membership I fear that in a matter of a few years the Society could effectively cease to exist. But if we work together we all stand to gain.

Finally, I want to remind and encourage everyone to participate in the Society's upcoming Field Trip to the Stillwater Complex. Ennis Geraghty, Chief Geologist for the Stillwater Mine, is going to lead us through some beautiful country laden with truly amazing geology. This trip will focus mainly on the ore-bearing Archean rocks of the Stillwater Complex and how they have been affected by Laramide deformation. The trip leaves from the Holiday Inn parking lot at 8:00 a.m. on Saturday, September 13th. As with last years' trip, participants will be responsible for their own food, drinks and transportation. To keep vehicles at a manageable number we encourage ride-sharing and will attempt to sort all of that out at the Holiday Inn on Saturday morning.

In Memoriam

James Lowell Cannon Jr.

James Lowell Cannon Jr., a long-time resident of Billings died on July 2, 2008 at the St. Aloisius Medical Center in Harvey, N.D. He was 78.

Born July 13, 1929, in Copeland, Kan. to James and Eldora Cannon, James was raised in Enid, Okla. and grew up working summers on his uncle's Kansas farm. A 1951 graduate of the University of Oklahoma Jim took his first job as a geologist with Shell Oil in Billings. In his 22 years with the company, he worked in Denver and Houston and eventually returned to Billings in 1973. He then joined Consolidation Coal and later, Meridian Oil.

Jim valued hard work and the pursuit of knowledge, and had a keen appreciation of the outdoors, which he passed down to his children. He also loved a good story.

MGS Fall 2008 Field Trip

Laramide Structural Features in the Stillwater Complex Portion of the Beartooth Mountains Front, Part II – the Stillwater River Canyon

Date: Saturday September 13, 8:00 a.m., depart from the Holiday Inn parking lot, travel by private vehicles, no limitation to participants.

Leader: Ennis Geraghty, Stillwater Mining Company

This one-day field trip will examine exposures in the Stillwater River canyon from Nye, Montana to the # 2 Portal at the Mouat chrome mine (inactive). Some Phanerozoic stratigraphy is exposed on this route as well as the Archean Stillwater Complex and its associated metal zones. Laramide deformation has profoundly affected these rocks and we will examine evidence from deep drilling at Stillwater Mine for a blind floor thrust, associated link (fore) thrusts, and segmented backthrusts. This complex fault architecture forms a hinterland-dipping, basement duplex within an “evolved” triangle zone at the Beartooth Mountains front.

**Mark your calendars now
so you won't miss this great field trip!**



The MGS is still looking for a few good books!

Thanks to the generosity of Ballard Petroleum and the MBMG, we have collected 65 of 72 identified MGS publications. Doretta Brush has shipped them to AAPG for digitizing.

Take a minute and search your library for any of the seven volumes we're missing.

Two copies of each MGS publication will be sent to the AAPG sponsored Data Pages group in Tulsa who will digitize the books. The digital data will be marketed by AAPG and MGS. The books will not be returned.

If you would like to donate a publication, call the Publication Committee editor collecting for that year:

Jay Shearer:	406-671-1282	jshearer@mt.gov	1950-1959
Gary Hughes:	406-248-8966	ghughes@imt.net	1960-1969
Jon Reiten:	406-657-2630	jreiten@mtech.edu	1970-1979
Joe Carlisle:	406-294-6222	jcarlisle@180.com	1980-1989

We need the following publications:

Copies

Needed	Year	Title
1	1956	1st International Williston Basin Symposium
2	1958	2nd International Williston Basin Symposium
2	1965	Geology of the Flint Creek Range, Montana
1		Symposium-Jurassic & Cretaceous Stratigraphic Traps,
	1966	Sweetgrass Arch
2	1975	Energy Resources of Montana
2	1982	4th International Williston Basin Symposium
2	1987	5th International Williston Basin Symposium



The 'Technical Play of the Day'

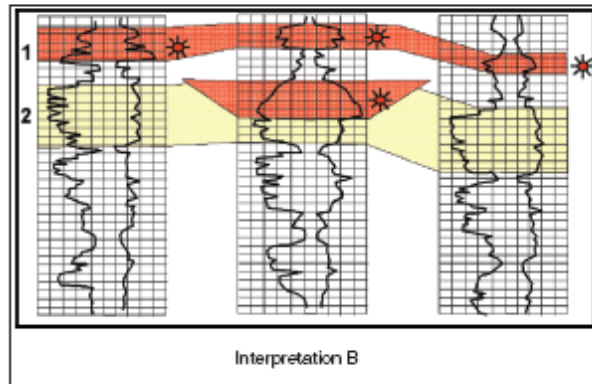
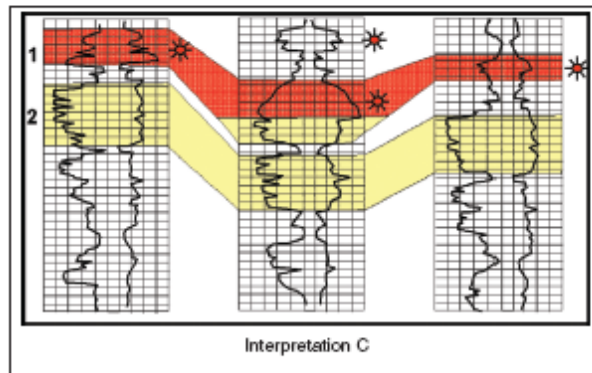
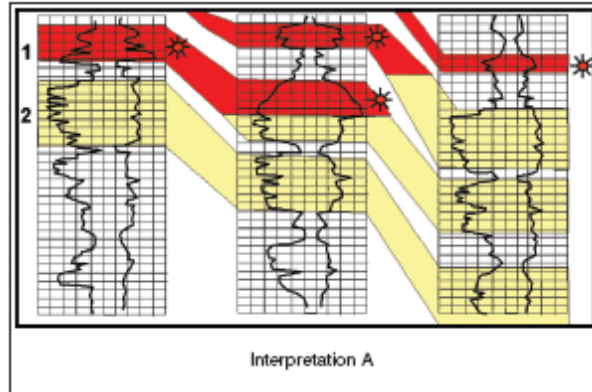
Robert Shoup, *Clastic Reservoir Systems*

Editors Note: "The Technical Play of the Day" is a regular feature in *The Correlator*. Not only will this provide the readers of *The Correlator* a fun way to sharpen their technical skills, it also provides individuals and companies a way to reach out to the technical community. If you or your company would like to provide a brief technical article and sponsor "The Technical Play of the Day" in future issues of *The Correlator*, please contact Bob Shoup at rcs@clasticman.com or Noma Newby at nnewby@aapg.org. The deadline for the next issue of *The Correlator* is August 30, 2008. Note that the DPA will retain publication rights to the quiz, as well as the answer.

Presented here are three interpretations of a cross section consisting of three wells drilled in a field. There is no paleo data, nor is there any dipmeter or FMI data available. All three interpretations are valid, however, only one honors all available 'tools' (resistivity markers, shales, water-levels, consistent thickness, etc) available to the interpreter. Which of the 3 interpretations offers the best fit?

All winning submissions received at rcs@clasticman.com before 31 August will be placed in a drawing. One person will win a one week training course of his or her choosing from SCA's international line-up of public courses. (Retail value of this prize ranges from \$2,375 to \$3,295 depending upon the course and location around the world). For information on public courses offered by SCA, go to www.scacompanies.com.

The "Technical Play of the Day" is sponsored by Subsurface Consultants and Associates. ▲



Republished from the AAPG's Division of Professional Affairs
"The Correlator" 2008 Summer Issue.

**Results of the
5th Annual Gary Kabearly
Memorial Golf Tournament
(Formerly known as MGS/MAPL
Golf Tournament)**

The Gary Kabearly Memorial Golf Tournament was held July 18th at the Laurel Country Club. Eighty contestants participated and the MGS raised \$700.

1st Place Team:

Jim Bob Byrd, Bryan White, Tom Hayes, John Peterson

2nd Place Team:

Pat White, Kerry Heerssen, Ivin Holmen, Shawn Heringer

3rd Place Team:

Ryan Kabearly, Wade Pannell, Dona Kabearly & John Pannell

And special recognition to the last place team

– 16 strokes behind the next worst team:

Andrew Urie, Bryant Reasnor, Shane Mogensen & Andy Hennes

**Special thanks to Keven Reinschmidt for
organizing the tournament,
and thanks to those that helped sponsor this great event.**

*Biography for Brian Gurney
of Montana State University – Billings*

(Editor's note: Mr. Gurney will be speaking at the September 17th MGS luncheon.)

Mr. Gurney graduated from the University of Colorado with an MBA in Information Systems. His post graduate professional experience was primarily in computerized quality control for components produced for assembly in prototype mainframe computers for IBM. He was offered an opportunity to be the Principal Investigator under a contract sponsored by NASA and the University of Colorado to document and publish the “best practices” for technology transfer, where the technology originated from the national laboratory system and the customer was small business. Upon return to Montana, he was employed to manage large projects, including personnel, materials and budgets, for numerous mining clients in the western U.S. He returned to higher education in 1999 as a lecturer in Operations Research and Project Management. In addition to his classroom obligations, he currently serves as Principal Investigator for several energy projects within the College of Business. His field of specialization is distributed generation of electricity and/or heat utilizing fuel cell technology.

REMINDERS

September 13

MGS Stillwater River Canyon Field Trip, Montana

September 17

MGS Luncheon, Billings

DENVER EARTH RESOURCES LIBRARY

Suite B-1 • 730 17th Street • Denver, Colorado 80202


Serving you with all your Geologic Information Needs

ROCKY MOUNTAINS/MID-CONTINENT
WEST COAST/ALASKA
ILLINOIS BASIN



Reasonable Out-of-State Membership Rates

(303) 825-5614

FAX (303) 825-1838



GeoMon Consulting
Lawrence M. Monson
Geologist



Energy & GIS Map Services

200 Hwy. 2 East, Suite F2
Wolf Point, MT 59201
406-653-2390, Fax 2391
406-650-7038, Cell
geomon@nemont.net



William B. Hansen, MSc

Consulting Petroleum Geologist

Jireh Consulting Services

"Providing" Excellent Service Since 1996

P.O. Box 3572
Great Falls, MT 59403

-NW Montana/Williston Basin Consulting
-AAPG Continuing Ed & Field Trips
<http://home.mcn.net/~wbhansen/>

Phone 406 - 452- 6783
Fax 406 - 564- 4593
Email: wbhansen@mcn.net

Advertising Rates:

Full Page \$100/month;

1/2 Page \$50/month;

1/4 Page \$25/month;

Business Card \$10/month.

All ads must be prepaid. Send ad and payment to: MGS, P.O. Box 844 Billings, MT 59103.

Submission deadline for the MGS Newsletter is the **10th** of each month. Submit requests to Brad Thompson, Editor, bthompson@stmaryland.com Or 245-6248

Montana Geological Society
PO Box 844
Billings, MT 59103

NONPROFIT ORG
U.S. POSTAGE
PAID
BILLINGS, MT
PERMIT NO. 104

MGS PUBLICATIONS

2006 Montana Oil & Gas Fields CD-----	\$65.00
MGS - NRGDC Northwestern Geologic Service Sample Logs (MT, ND, SD) -----	\$2500.00
Over 2500 sample logs on CD-ROM, regional sets also available	
2000 Guidebook: Northern Montana & the Montana-Alberta Thrust Belt (2 Vol. Set) -----	\$125.00
50 th Anniversary Symposium	
1998 8 th International Williston Basin Symposium -----	\$55.00
1998 Core Workshop Guide for Williston Basin Symposium -----	\$30.00
1997 Bighorn Symposium Guidebook -----	\$50.00
1997 MGS-TRGS Field Conference Guide -----	\$25.00
"The Edge of the Crazies: Where the Mountains Meet the Plains"	
1996 AAPG Rocky Mountain Section Meeting Expanded Abstracts Volume -----	\$25.00
1995 Guidebook: Seventh International Williston Basin Symposium -----	\$100.00
1993 Guidebook: Energy and Mineral Resources of Central Montana -----	\$54.00
1991 6 th International Williston Basin Symposium -----	\$55.00
1991 Guidebook: Geology and Horizontal Drilling of the Bakken Formation -----	\$50.00
1991 Field Trip Guides: Beartooth Mountains -----	\$7.50
Sequence Stratigraphy of the Eagle Sandstone at Billings -----	
1989 Guidebook: Geologic Resources of Montana -----	\$80.00
1986 Guidebook: Geology of the Beartooth Uplift and Adjacent Basins -----	\$45.00
1985 Symposium: Montana Oil and Gas Fields -----	\$55.00
1978 Economic Geology of the Williston Basin -----	\$100.00
1971 Catalog of Stratigraphic Names -----	\$10.00
1969 Guidebook: Economic Geology of Montana -----	\$8.50
1951 BGS 2 nd Annual Central Montana Field Conference -----	\$12.50
1950 BGS 1 st Annual Field Conference -----	\$12.50

To place an order please contact Doretta Brush (406) 259-8790 dbrush@ballardpetroleum.com
S & H charges are not included in prices. Add \$6 US shipping or \$12 Canadian for each book ordered. For 1985 guidebooks add \$15 US shipping or \$25 Canadian.